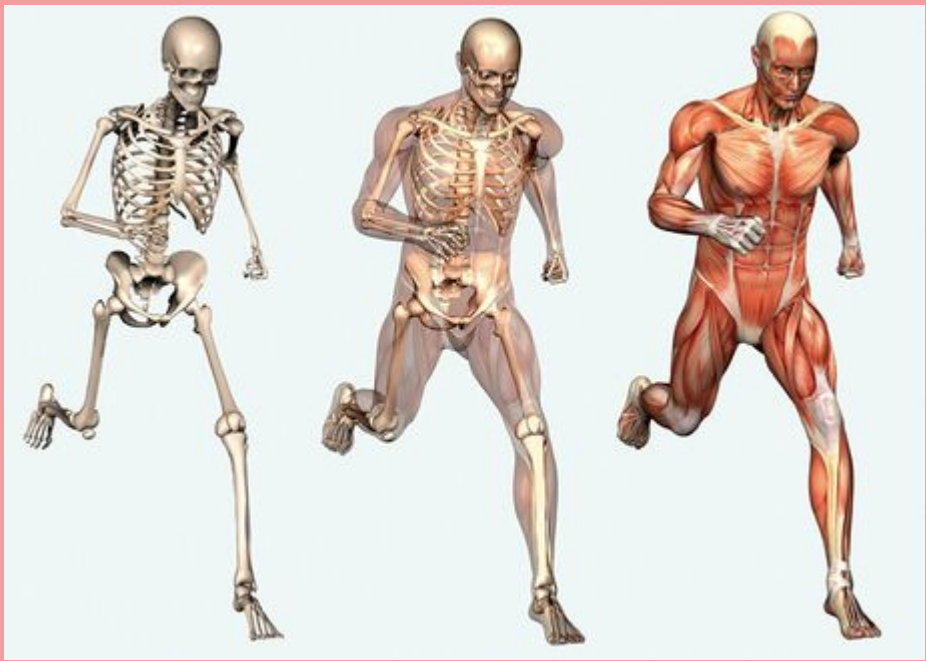


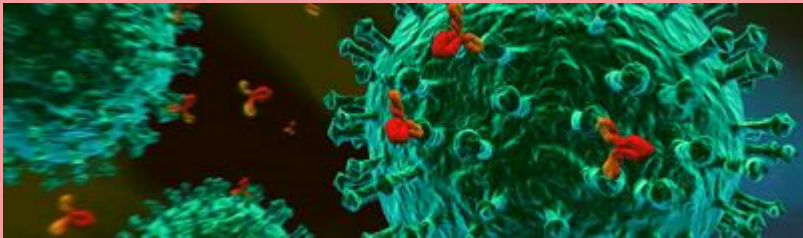
# SISTEMA IMMUNITARIO

## PROTEZIONE+DIFESA



### ANTIGENI

fattori esterni che danno fastidio



### LINFA

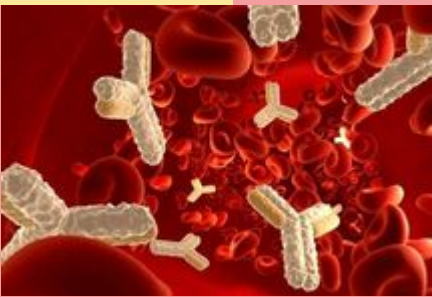
sostanza ricca di globuli rossi e bianchi



MONOCITI =  
ANTICORPI



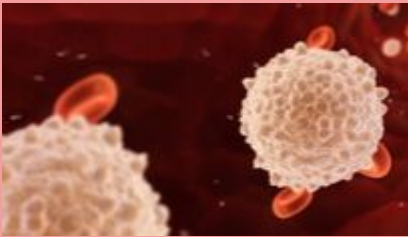
**difesa  
specifica**



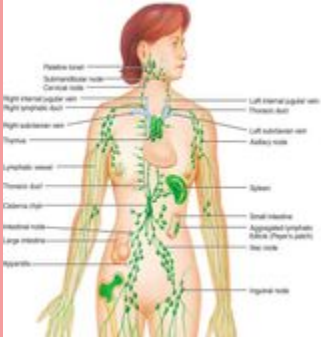
LINFONODI=  
GLOBULI BIANCHI



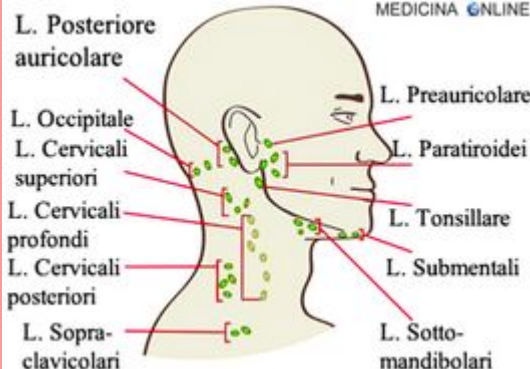
**difesa a-  
specifica**



### ORGANI



### LINFONODI



### GRUPPI SANGUIGNI

		Donatore								
		A		B		AB		0		
		+	-	+	-	+	-	+	-	
Ricevente	A	+	●	●					●	●
		-		●						●
	B	+			●	●			●	●
		-				●				●
AB	+	●	●	●	●	●	●	●	●	
	-		●		●		●		●	
0	+							●	●	
	-								●	